

King's Lynn Community Choir  
c/o Jill Bennett

26 September 2025

Dear Members of King's Lynn Community Choir ,

I am writing to sincerely thank you for your generous donation of £1250.00 representing the proceeds from the ticket sales of the spring concert. We are truly grateful for your ongoing support and for all the effort that went into organising the event. The choir worked incredibly hard to prepare and it was a shame the concert didn't go ahead; however we are looking forward to being a part of your winter performance. Enclosed is a certificate of thanks as a small token of our appreciation.

Fundraising events like yours are a wonderful way to bring people together while raising essential funds for the Hospice. Your contribution will make a meaningful difference, helping us continue to provide high-quality care and support to individuals and families across our community.

We believe in living life to the end and bringing joy to patient's lives. We work with everyone as an individual, supporting them on each step of their journey through our outpatient unit, our inpatient unit, and in their own homes to live a good life and achieve a good death, in their place of choice. We also work with families along the way and offer bereavement support.

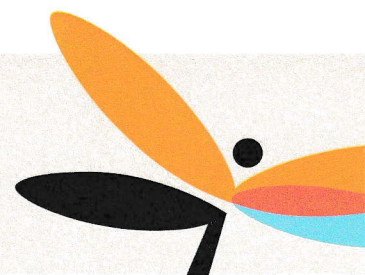
We are a charity and the only independent Hospice in this part of the UK, which enables us to deliver the most compassionate, dynamic and proactive end-of-life care. As such we are a centre of clinical excellence in the region and further afield, recognised at the forefront of education in palliative care for over 40 years.

As a supporter, you are extremely important to the Hospice. The cost of delivering our services has risen to over £6.7 million a year, and with only 25% funded by the NHS, we rely heavily on the generosity of our community. Every donation truly matters and directly supports the continuation of our essential care.

Once again, thank you. We simply couldn't do what we do without fantastic supporters like you!

With best wishes,

Clara Smith  
Community Fundraiser



# **Thank you** **King's Lynn** **Community Choir**

**for raising**  
**£1250.00**

**in aid of Tapping House**

Nicola Ellis - Chief Executive

**26<sup>th</sup> September 2025**

Hospice: 01485 601700 | [enquiries@tappinghouse.org.uk](mailto:enquiries@tappinghouse.org.uk) | [www.tappinghouse.org.uk](http://www.tappinghouse.org.uk)

Fundraising & Marketing: 01485 601701 | [fundraisingteam@tappinghouse.org.uk](mailto:fundraisingteam@tappinghouse.org.uk)

Registered in England • Company No. 3185605 • Registered Charity No. 1062800

Registered Office: Wheatfields, Hillington, King's Lynn, Norfolk, PE31 6BH

